

ONLINE 'WRITTEN' TEST INSTRUCTIONS

LIEUTENANTS EXAM

MAY 3, 2022

South Burlington VT



Welcome to the Test

- Welcome to the South Burlington VT Lieutenants Exam being held May 3, 2022.
- Today is the Online 'Written' exam.
- Please follow the instructions on the following slides.
- You can read and review until you are comfortable and ready to start.
- Please ask the Proctors if you have any remaining questions.
- The Overview of the Test follows



**Training, Testing &
Strategic Services
for the Fire Service**

About the Test

- There are 100 Multiple Choice Questions that are delivered in random order.
- Question answers are also in random order.
- Created as follows:
 - 25 questions from *Fire Officer's Handbook of Tactics* by John Norman, 4th Edition, 2012
 - 25 questions from *Brannigan's Building Construction for the Fire Service*, 5th Edition (Jones & Bartlett, 2015).
 - 50 Questions from *Fire Officer: Principles and Practice*, Enhanced 3rd Edition (Jones & Bartlett, 2015).
- *Bottom line – the question being answered by the person next to you will be different – so don't bother looking.*

The primary mission of the fire service is to save lives, protect property, and protect the _____.

Select one alternative:

☐ equipment.

☐ enviornment.

☐ culture.

☐ bystanders.

Time to Complete

- You have 2 hours to complete the exam.
- The clock starts when you begin the exam.
- A Timer in the upper left corner of the page lets you know how much time is remaining

The screenshot displays the MissionCIT exam interface. A yellow oval highlights the 'Candidate ID' section in the top left corner, which shows '1 hour, 34 minutes remaining'. To the right of this are icons for Wi-Fi, a bell, and a menu. Below the timer, a question is displayed: 'The primary mission of the fire service is to save lives, protect property, and protect the _____.' The instruction 'Select one alternative:' is followed by four radio button options: 'equipment.', 'enviornment.', 'bystanders.', and 'culture.'. At the bottom of the screen is a navigation bar with buttons numbered 1 through 10, and a checkmark icon. The first button (1) is currently selected and highlighted in blue.

Scoring & Results

- Scoring is done by the computer for this section after you press 'Submit'.
- Your score will be provided to the designated personnel at South Burlington VT
- You will be notified by the designated South Burlington VT staff when scores are available.



Part 2 – Rules & Security



Login Credentials

- You should have received your login credentials from the proctor when your candidate verification has been verified.
- If you do not have your login – like the picture on the slide, please see one of the proctors immediately.
- Verify that the e-mail address is yours!
- Do NOT USE the credentials on this slide! They are for demonstration only.

Email: sbfd@gmail.com

Username: **99358064**

Password: **y7vd**

On your desk – What's allowed?

- When you signed in, you should have received a paper with your login credentials plus one (1) blank sheet of paper and a pen.
- Your testing station is comprised of a laptop, mouse & mousepad.
- Water or beverages in closed containers
- That's it!
- Once you have finished the exam, you must return the paper to the Proctor(s) – the pen is yours.



What's NOT allowed?

- No smoking
- No cellphones or other electronic devices unless cleared 'in writing' with the proctors
- No cameras
- Nothing in your lap
- No bags, briefcases or other containers
- You will not be permitted to leave the testing area once the examination begins.



On your computer | What's allowed?

- Using the testing workstation as-is – no changes are allowed!
- You can view this instructional PowerPoint
- You can click on the link to the Practice Test & Take it
- You can click on the link to the Test
- You can take the test
- That's it

On your computer | What's NOT allowed?

- Browsing the internet
- Opening a second browser window or new tab
- No email
- Changing computer settings
- Opening any other programs
- Connecting any device to the laptop computer



Part 3 – Logging into the Test

Student Login

Log in with SSO

[... or with registered user](#)

Username (required)

Username (required)

Password (required)

Password (required)

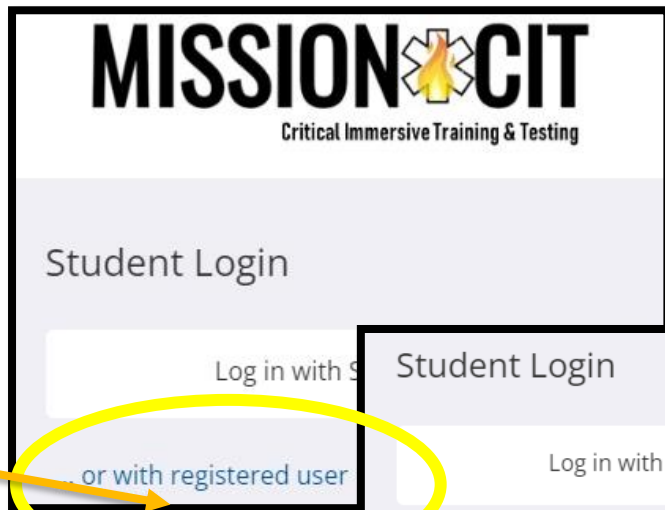
Choose language:

English ▼

Login

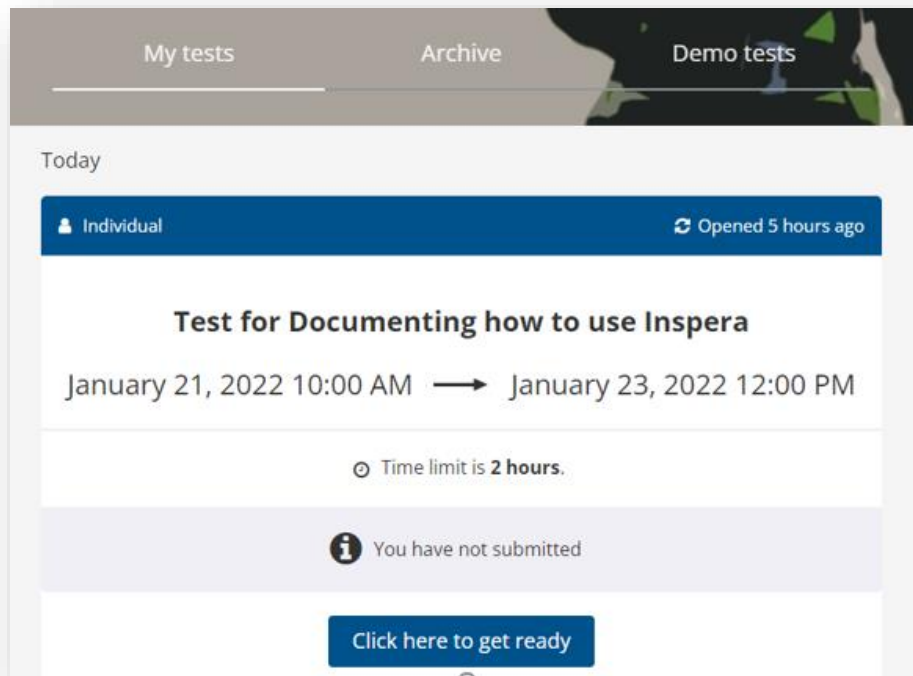
How to Login

- Once you complete this PowerPoint, you will be directed to press a link that takes you to the test.
- Once there:
 - Press **...or with registered user**
 - Then the full login appears
 - Enter your Username – an eight (8) number code
 - Enter your Password – a four (4) character code – that is case sensitive
 - Then press **'Login'**



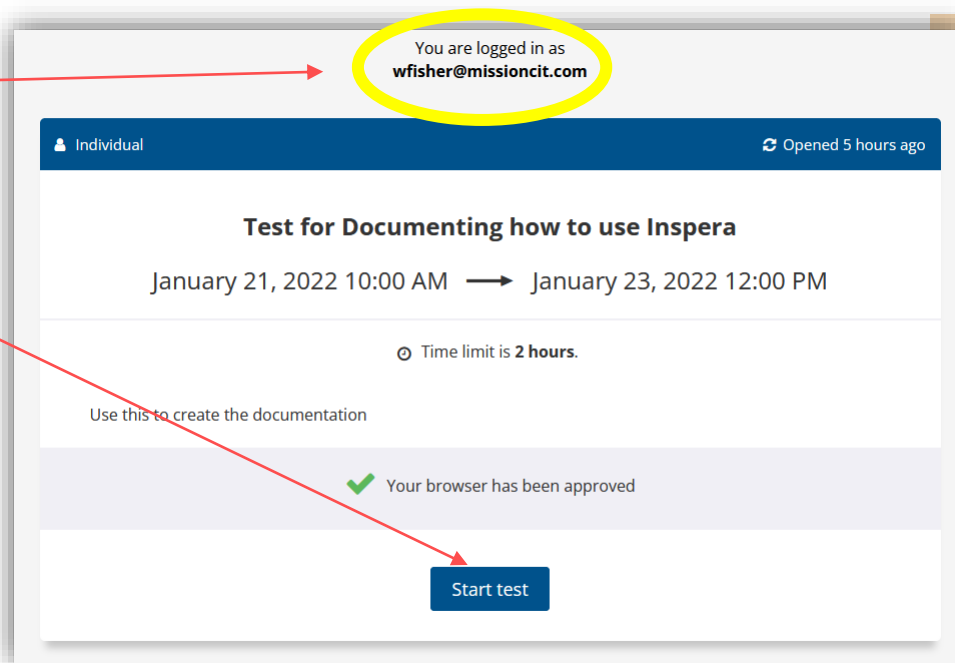
After you Login | First Screen

- First Screen – you will see this screen
- Press 'Click here to get ready'
- This checks your browser and takes you to the next screen

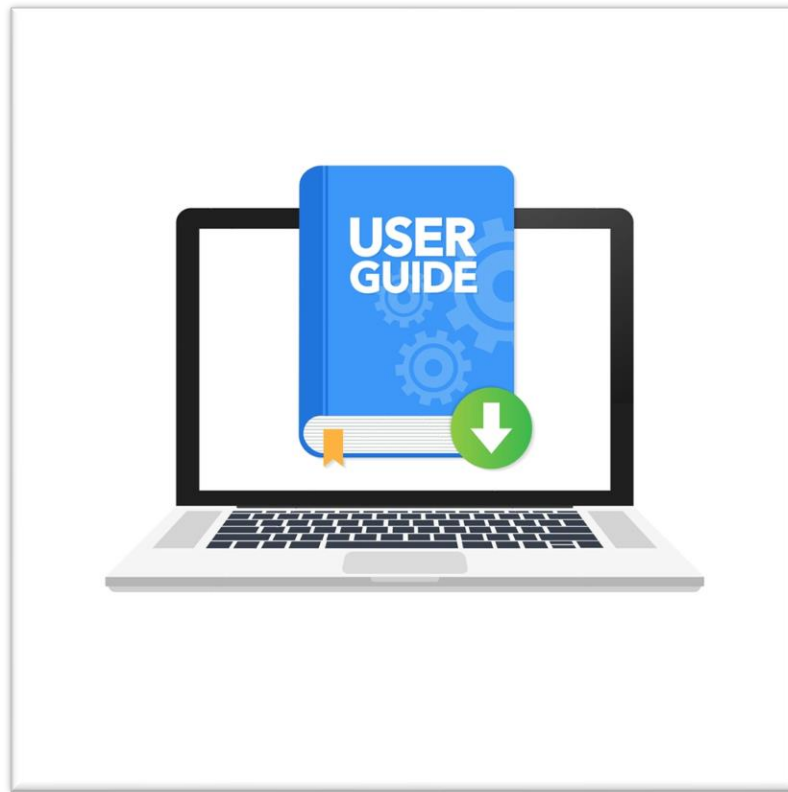


After you Login | Second Screen

- Make sure your email address is at the top of the screen
- When ready, press 'Start test'
- This will bring you to the first question



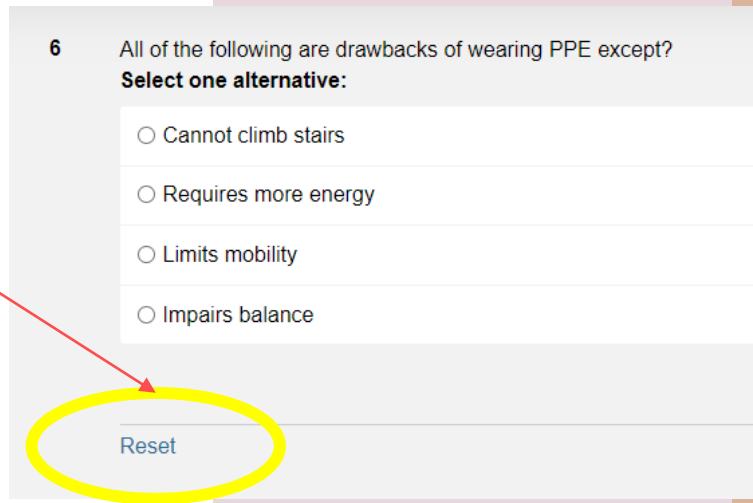
Part 4 – Test Instructions



Once in the test | On the question pages

You can:

- Answer a question and go to the next one
- Skip a question and come back later
- Reset a question – removes the answer and leaves the question unanswered
- 'FLAG' a question to come back and review later – answered or unanswered
- Go to a summary page showing status of answered, unanswered and flagged pages
- Navigate to a specific question using the navigation bar at the bottom



6 All of the following are drawbacks of wearing PPE except?
Select one alternative:

- ☐ Cannot climb stairs
- ☐ Requires more energy
- ☐ Limits mobility
- ☐ Impairs balance

Reset

Elements on the Question Page

1. Candidate ID – should be yours!
2. ? Remaining – time remaining on test
3. Shows you have an internet connection
4. Options menu – you can change the font size if you like
5. Question Number
6. The question
7. The available answers
8. The answer you chose (blue)
9. Flag
10. Arrows to go forward or back a question
11. Progress bar on % answered questions
12. Navigation bar showing questions answered, unanswered and flagged
13. Checkmark – takes you to summary page – showing answered, unanswered, flagged questions

The screenshot displays the MissionCIT Question Page interface. At the top, a header bar contains a 'Candidate ID' field (1), a timer showing '? remaining' (2), an internet connection status icon (3), and an options menu icon (4). Below the header, the question number '5' is displayed. The question text (6) reads: 'Roof coverings contain combustible materials including all of the following except. Select one alternative:'. The available answers (7) are listed as radio button options: 'Rubber' (8, selected), 'Asphalt', 'Steel', and 'Tarpaper'. A flag icon (9) is located to the right of the question. Below the question, a progress bar (11) shows the percentage of questions answered. At the bottom, a navigation bar (12) displays question numbers 1 through 10, with question 4 highlighted. A checkmark icon (13) is located at the bottom right of the navigation bar.

Answering a Question

- Simply click on the answer you want
- It will turn blue
- You can press reset to clear the answer
- Pressing on another answer selects that answer
- There is only one answer allowed per question for multiple-choice questions

6 All of the following are drawbacks of wearing PPE except?
Select one alternative:

☒ Cannot climb stairs

☐ Requires more energy

☐ Limits mobility

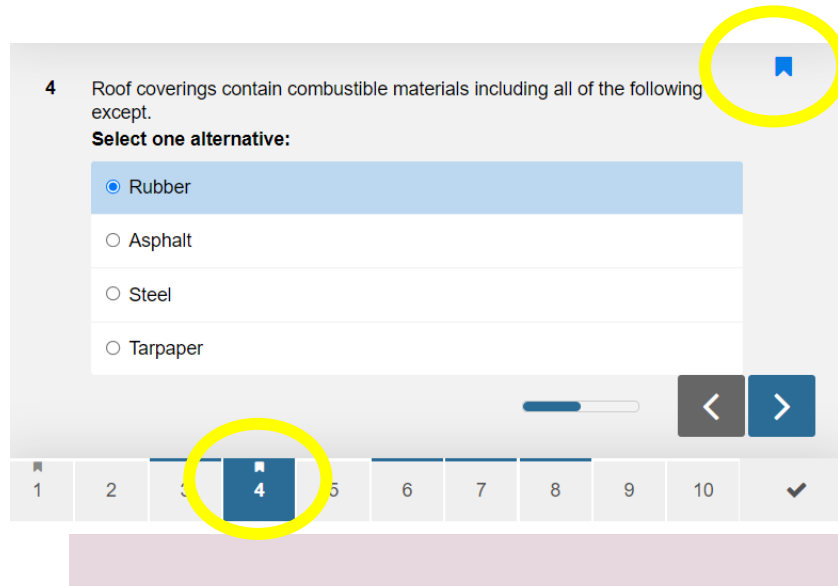
☐ Impairs balance

Reset

1 2 3 4 5 6 7 8 9 10 ✓

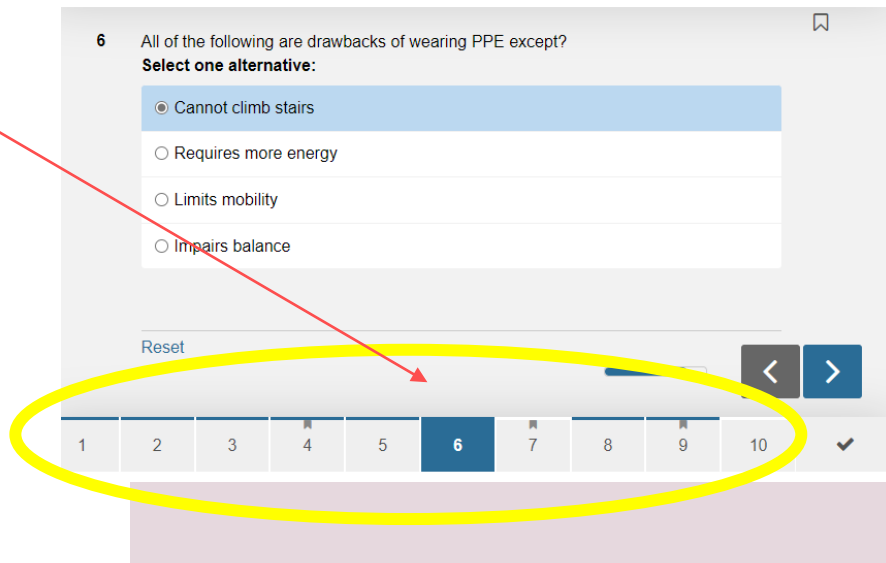
Flagging a question

- You may want to review a question later after you have gone through the test – and before submitting your answers.
- To flag a question, click on the 'flag symbol' in the upper right-hand corner.
- You can still answer the question and move on.
- Notice that the question is marked as flagged in the navigation bar.



Navigation Bar

- The Navigation Bar is at the bottom of the question. You can:
- Jump to any question
- See if a question is answered, unanswered or flagged as follows:
 - Answered – horizontal blue bar at the top
 - Unanswered – White bar
 - Flagged – the flag is blue
- The Check Mark takes you to the summary screen where you can submit your answers



Part 5 – Review your answers, unanswered and flagged questions | Complete the test

Ready to submit?
You have 2 unattempted questions.

Submit now

All questions (10) Not attempted (2) Flagged (3)

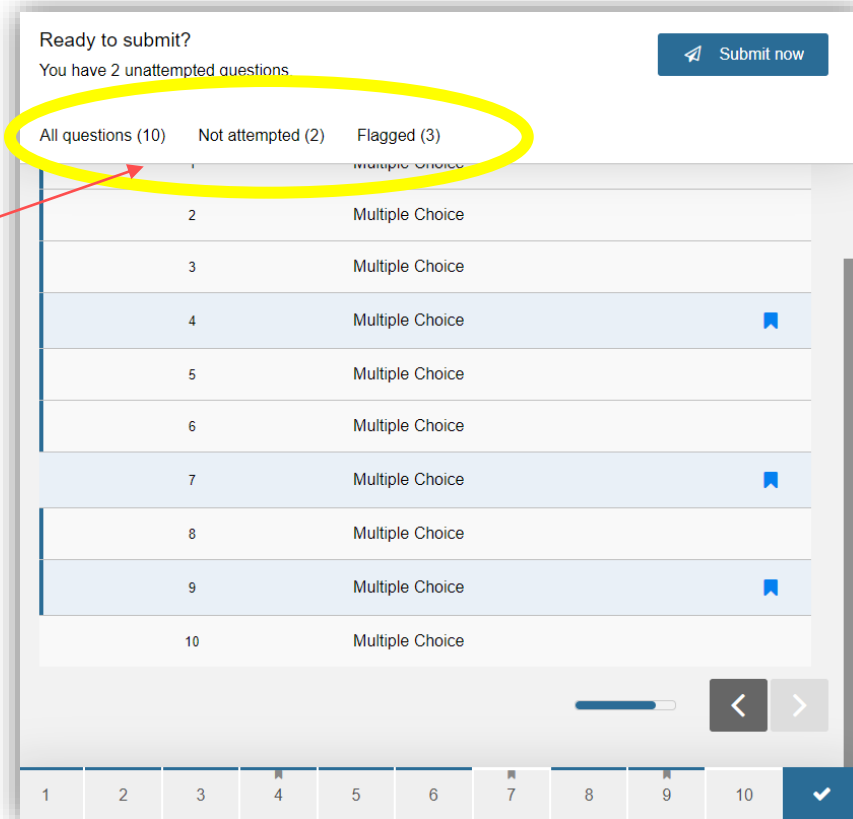
1	Multiple Choice	
2	Multiple Choice	
3	Multiple Choice	
4	Multiple Choice	🔖
5	Multiple Choice	
6	Multiple Choice	
7	Multiple Choice	🔖
8	Multiple Choice	
9	Multiple Choice	🔖
10	Multiple Choice	

< >

1 2 3 4 5 6 7 8 9 10 ✓

Before Submitting your Answers

- Press the ✓ on the navigation bar – this brings you to a summary page
- Here you can navigate to questions that you want to review or may be unanswered
- To see a set of questions, you can click on
 - All Questions
 - Not Attempted or
 - Flagged
- Note: there is no penalty for an incorrect answer – so do your best.



Completing the Test – Press Submit Now

- Once you are satisfied with your answers you are ready to complete the test.
- Press the ✓ on the navigation bar – this brings you to a summary page
- When you are absolutely sure – there is no going back – then Press **Submit Now**

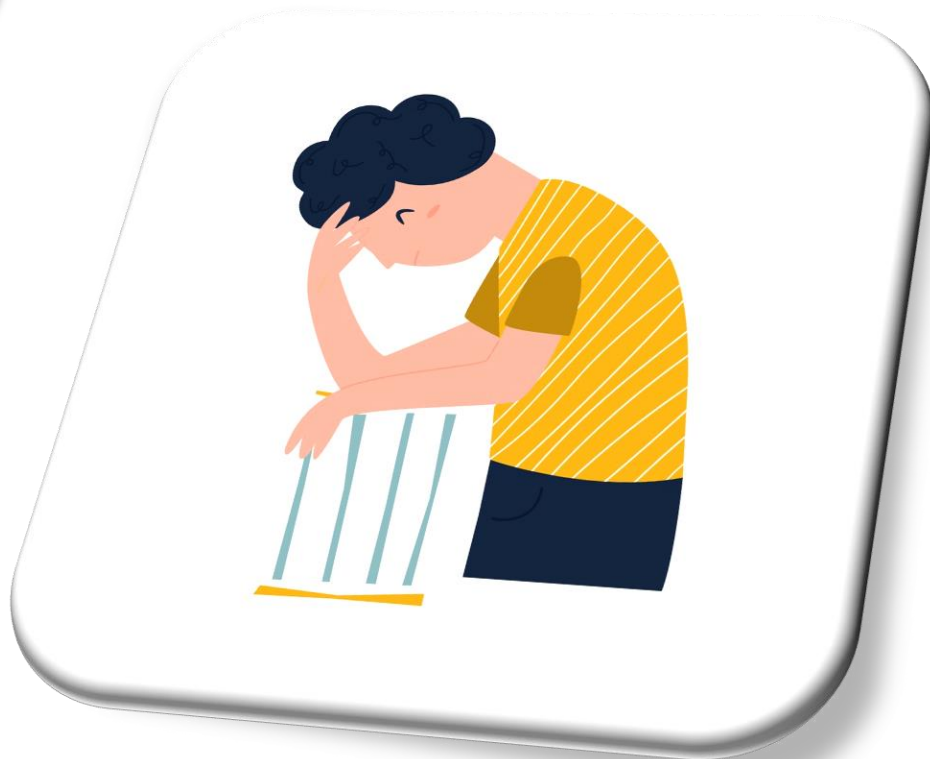
Ready to submit?
You have 2 unattempted questions.

All questions (10) Not attempted (2) Flagged (3)

1	Multiple Choice	
2	Multiple Choice	
3	Multiple Choice	
4	Multiple Choice	✓
5	Multiple Choice	
6	Multiple Choice	
7	Multiple Choice	✓
8	Multiple Choice	
9	Multiple Choice	✓
10	Multiple Choice	

1 2 3 4 5 6 7 8 9 10 ✓

Part 6 – Stuff happens – now what?



Technical Difficulties

- Technology Breaks
 - → No worries – we have spare laptops, mice, and power supplies. Even if you need a new laptop, you will be able to continue where you left off
- No Internet
 - → No worries – we have a hot spot – and if that doesn't work, we can download your test to a flash drive and submit it when the internet returns

User Difficulties

- I pressed submit before I was ready
 - → No worries – the proctor can reopen your test
- I am lost – can't figure out how to work the computer or the software
 - → No worries – let a proctor know and we will help you become comfortable
- I am ill or have a personal emergency and can't continue
 - → No worries – we can provide an alternate test at another time – if permitted by the rules

Security Violation

- I pulled out my cell phone – it's a habit – but I didn't look
 - → No worries – give your cell phone to the proctor
- I have to use the restroom
 - → No worries – give all your electronics to the proctor – we can pause your test (if permitted by the rules)
- However, any cheating violations are not tolerated and will result in dismissal from the test and a failed score
 - → So do not open another browser page, open your cell phone, answer a call, open another program, or bring out any unauthorized materials.
 - → ***If you have a special circumstance, the proctor(s) must be notified before the test starts***

Part 7 – It all worked! What's next?



Answers Submitted – What's Next?

- Congratulations on completing the Exam!
- You will be notified of your results by the town of South Burlington
- Thanks for testing with MissionCIT